

Installing the Software

Do not plug the Mach 5 into your PC yet.

Step 1, Installing the Applications Software.

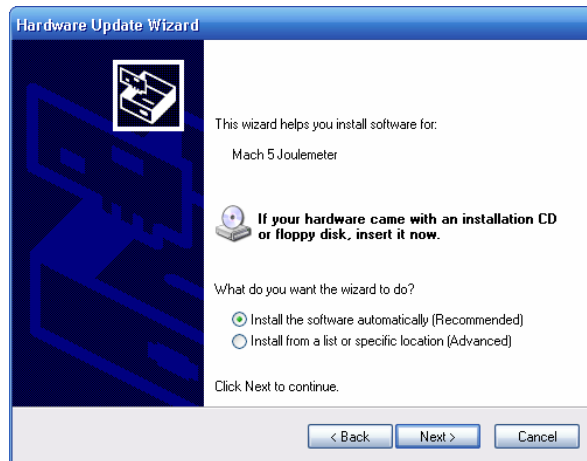
1. Insert the installation CD. The installation will start automatically. If it does not, browse to the setup.exe file on the CD and run it.
2. The Welcome to the Spectrum Detector Mach 5 Installation Wizard will open. Select Next.
3. The Select Destination Folder dialog box will open. It is recommended that you leave the destination folder at the default setting. Select Next.
4. The Ready to Install the Application dialog box will open. Select Next. The application software and support files will be installed.
5. Upon completion of the installation, the Success dialog box will open. Select Finish.
6. Leave the CD in your PC as the USB drivers are located on the disk and are needed for step 2.

Step 2, Installing the USB Drivers

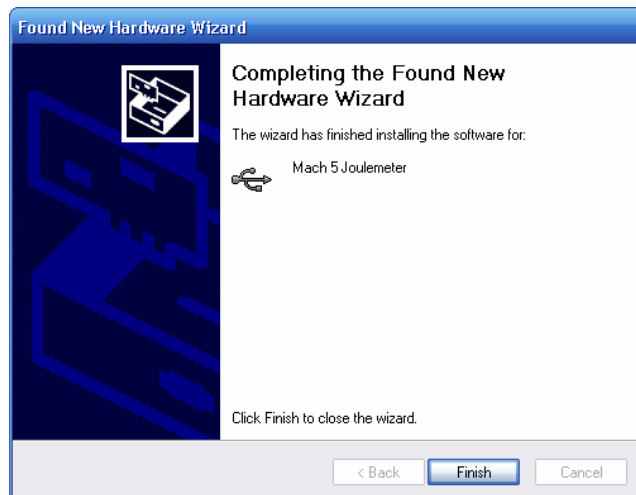
1. Connect the Mach 5 to your PC with the supplied USB cable.
2. Connect the power supply and turn on the Mach 5.
3. The Found New Hardware Wizard will run. If the Windows Update prompt appears, select No, not this time and press Next.



4. When the Install from CD appears, select Install Software Automatically and press Next.



5. When the Completing prompt appears, select finish.



The software installation is now complete. You may now run the application software. The software will wait until it finds a Mach 5 instrument on the USB before it becomes functional. If the Mach 5 is disconnected from the USB or turned off, the software will return to the wait state until the Mach 5 is on the USB again.